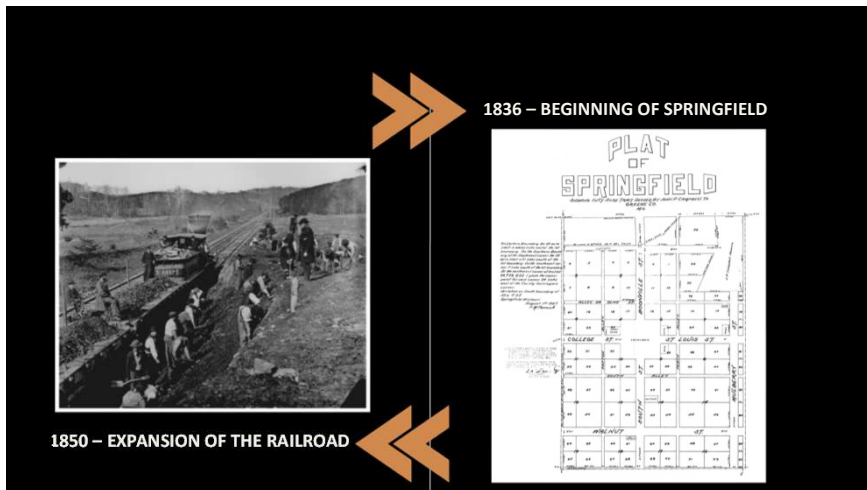




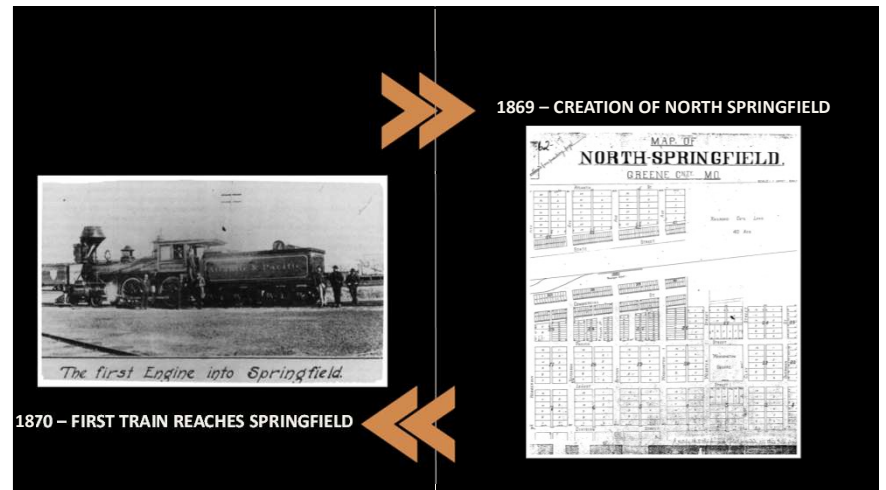
1



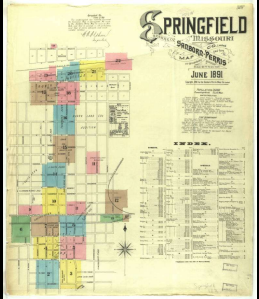
2




3



4





1887 – CITIES MERGE TOGETHER




1873 – NEW RAILROAD CAR & ENGINE SHOP


5

1901 – RAILROAD MAJOR EMPLOYER- THREATENS TO MOVE HEADQUARTERS




1902 – UNDERPASS BUILT AT LYON & WASHINGTON AVE.




1902 – JEFFERSON AVE FOOTBRIDGE BUILT

6



2002 – FIRST REHABILITATION OF BRIDGE

2003 – PLACED ON THE NATIONAL REGISTER OF HISTORIC PLACES



THIS PROPERTY HAS BEEN PLACED ON THE NATIONAL REGISTER OF HISTORIC PLACES BY THE UNITED STATES DEPARTMENT OF THE INTERIOR

7



2025 – CONSTRUCTION BEGINS



2016 – BRIDGE CLOSED

2026 BRIDGE TO REOPEN

8





Significance

9

Engineering

- Innovative design to construct bridge with minimal impact to RR service.

Construction of Cantilever Arm
Source: Transactions of the American Society of Civil Engineers, Volume 73, 1911, Digitized by Internet Archive

- Constructed from readily available materials which are lightweight and able to be handled by workers.
- Floor beams that support the timber deck are constructed of railroad track pieces.

10



Iconic & Connection

- Icon of Springfield History
- Transportation connection for pedestrians & bicycles
- Connection to revitalizing creative neighborhood
- Significant to businesses in a booming historic district.



11

Community Events



12



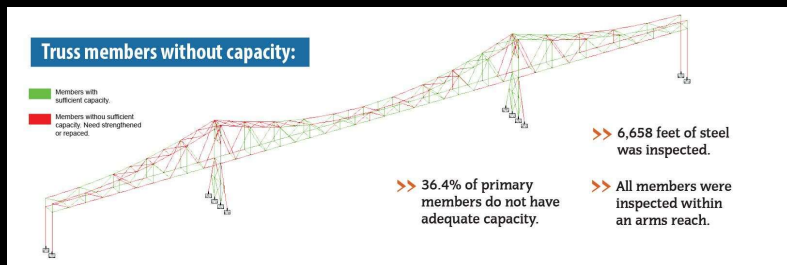
Evaluation & Solutions

13



14

Structural Evaluation Member Capacity



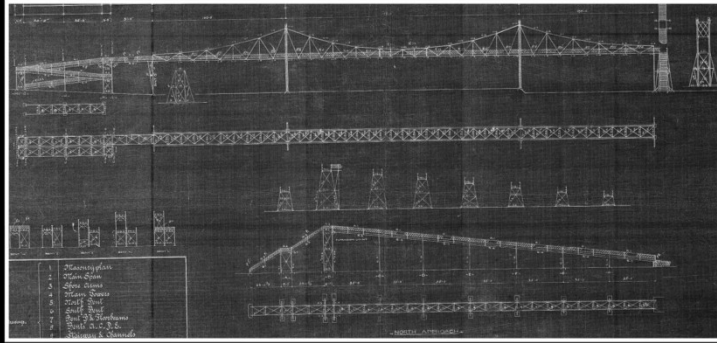
15

SCOPE OF WORK - FULL REHABILITATION

- Structural Repairs to Trusses
- Structural Repairs to Approaches and Stairways
- Remove Existing Lead Based Paint and Apply New Paint System
- Design New Elevators on North and South Approach for ADA
- Update Bridge Lighting System

16

Ramps and ADA Compliance



17



18



19



20



Construction

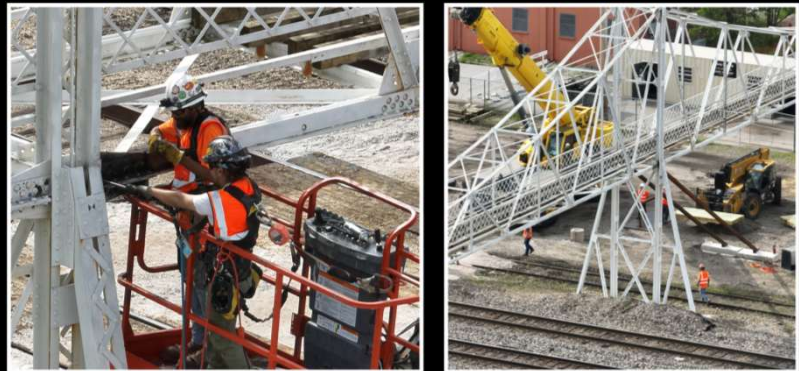
21



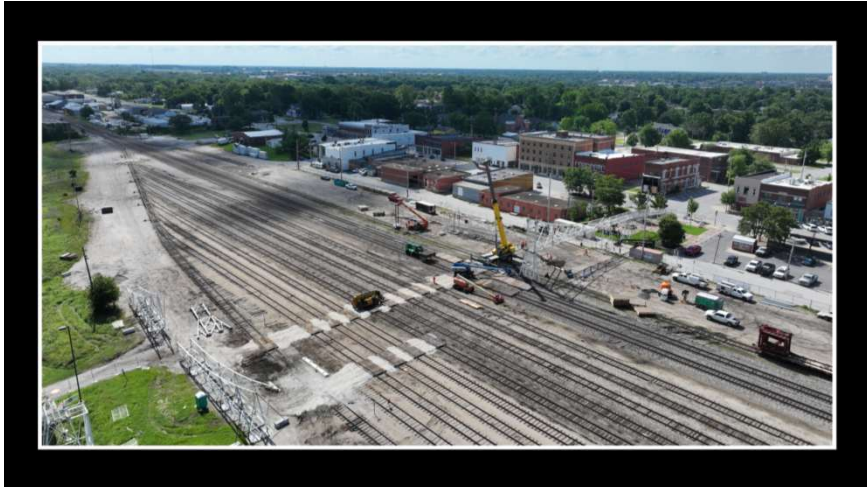
22



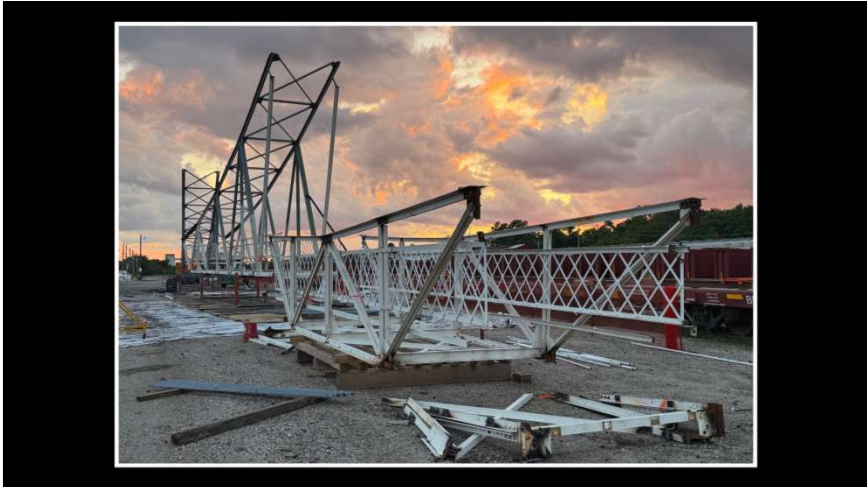
23



24



25



26

REMEMBER.
RESTORE.
RECONNECT.

JEFFERSON AVE FOOTBRIDGE

GRE
GREAT RIVER
ENGINEERING

CITY OF
Springfield

Thank You

27